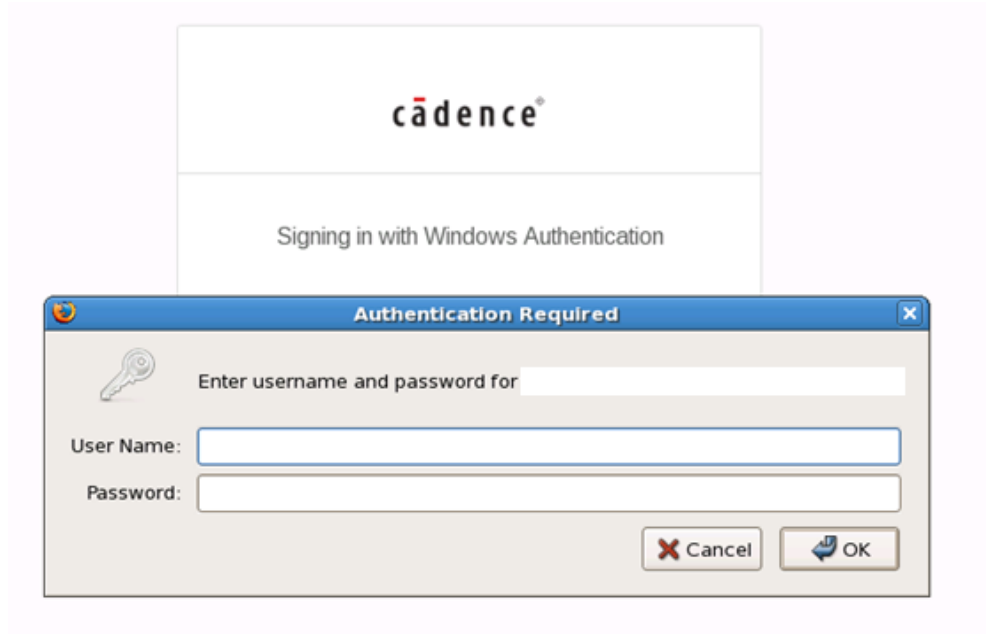


Instruction to download and install Innovus

(1) Use the browser to visit <https://download.cadence.com> from the **linux** server where you want to install Innovus. In this document, we use firefox as the browser and the shell of our linux sever is tcsh.

(2) You will see the following webpage, and then use the account and password given from ISPD contest to log in.



(3) Select "Complete Media Images", "LINUX", and "I Agree". Then, click "Save Preferences".

MY DOWNLOAD PREFERENCES

i Please select your download preferences. You only have to set-up these preferences once. However, you may return to edit your preferences if required.

All fields are required except the ones marked optional.

1. Download Method

To use InstallScope, you need to download and install InstallScope. Presently, it is supported for - IBMRISC, LINUX, and SOLARIS.

InstallScope using HTTP

Complete Media Images

(optional) I want to download InstallScope after saving My Download Preferences.

2. Default Operating System (OS)

Select an OS platform for which you download more often. You will have option to select a different OS while selecting a release for

IBMRISC

LINUX

SOLARIS

WINDOWS

SOLX8664

OTHER

3. Agreement.

Please click on the following link to display [Terms of Use Agreement](#)

I Agree

I Do Not Agree (This selection will log you out of this application) .

Save Preferences »

(4) Click the highlight link below

DOWNLOADS: Cadence Releases Available for Installation

To get information about, download, install, and configure Cadence releases:

1. **Check your preferences:** Click the [Edit](#) button on My Downloads Preferences to check or change your download method and default OS.
NOTE: Do not choose to download Media images unless you are required, for backwards compatibility, to use Softload in your environment.
2. **Get release information:** Click on a Release below to view Readme files, product listings, and available updates and hotfixes. You can also optionally download Release control files (for use with InstallScope).
3. Review the "What's New" chapter of the Release Documentation provided, where available, to get important updates about the release, its products, related licensing, and other pertinent information.
4. **Install InstallScope:** Install InstallScope for UNIX based products if it is not already installed in your environment. See [Getting InstallScope](#) for details.
4. **Install Download Manager:** Install Cadence Download Manager, to manage the base and update releases for OrCAD/Allegro 17.2 (or later), on Windows. See [Getting Download Manager](#) for details.
5. **Download, install, and configure products:** Run InstallScope as a standalone utility to download, install, and configure products. See [Using InstallScope](#) for details. For Windows, run Download Manager to download, install, and configure OrCAD/Allegro 17.2 (or later) and Signity 2016 (or later). See [Using Download Manager](#) for details.
6. **Sign up for email:** Subscribe to the Cadence [Cadence Online Support](#) UPDATE to Receive Product

IBMRISC	LINUX	SOLARIS	WINDOWS	SOL_x86_64	OTHER
ADW166				INCISV141	MOV201611
AES10				INCISV142	MOVAGILE
ASSURAM1				INCISV151	MMP161
CADENCEHELP				INCISV152	MMP171
CCP561				INDAG01704	MMSM151
CICE61				INDAG01710	MODUS161
CONFRML171				INDAG0201611	MODUS162
CONFRML172				INDAG0A1	MODUS171
CONFRML171				INDAG0AGILE	MODUS172
CPAR2				INNOV1S152	MVS161
CTOS142				INNOV1S161	MVS162
EQ142				INNOV1S162	MVS171
ETI151				INNOV1S171	MVS172
ETS131				INVSMM171	OrCAD/Allegro 17.2 (SPB172)
EXT152				INVSOP171	PASS1
EXT161				IKES21	PDAPP151
EXT171				JASPER1612	PDAPP161
EXT172				JASPER1703	PDAPP171
EXTS152				JASPER1706	PDES10
EXTS171				JASPER1709	PPC141
FINALEZ2				JLS152	PPC152
FORTE				JLS161	PPC162
GENUS161				JLS162	PTM151
-----				-----	-----
					SIG1206
					SIGR172017
					SPB166
					SPB170
					SPBS1721
					SPECTRE161
					SPECTRE171
					SSV161
					SSV162
					SSV171
					STEP10
					STRATUS152
					STRATUS161
					STRATUS162
					STRATUS171
					SW131
					SW171
					UXE151
					UXE171
					UXE175
					VPCAT113
					VXE151
					VXE161

My Download Preferences

Download Method:
InstallScope using HTTP

Default OS:
LINUX

[Edit](#)

Site Maintenance

No Site Maintenance Scheduled.

About InstallScope and Cadence Download Manager

InstallScope lets you download and install selected UNIX based Cadence products in a release in a single step.

Click [here](#) for detailed information about how to download, install, and use InstallScope. The most recent version is 4.23402.

Download Manager lets you install windows based products.

Click [here](#) for detailed information about how to download, install, and use Download Manager.

Announcement

Feb 15, 2017

IMPORTANT INSTALLATION INSTRUCTIONS for VIPCAT 11.30.046 or later releases.

[More](#)

Latest Releases (past 30 days)

13 Dec 2017
[MPS1210](#), HOTFIX, LINUX RHEL 5, LINUX RHEL 6, LINUX RHEL 7, LINUX SLES 11

12 Dec 2017
[XC-ELUM1710](#), HOTFIX, LINUX RHEL 6, LINUX SLES 11, LINUX SLES 12

(5) Click the "download" button to download the tool which be able to download and install innovus

cādence

About InstallScope

[InstallScope Quick start](#)

InstallScope lets you download Cadence products via the internet. With InstallScope, you download and install selected products in a release in a single step.

Since you install only the products you want, using InstallScope can be much faster than manually downloading and extracting the complete Release Media images.

This page describes how to get and use InstallScope:

- [Getting InstallScope](#)
- [Using InstallScope](#)
- [InstallScope Documentation](#)

Getting InstallScope

You need only one InstallScope installation per site. You can use InstallScope to install products on the following platforms: HPPARISC (HPUX), IBMRISC (IBM AIX), LINUX and SOLARIS.

Follow these steps to install InstallScope.

1. Download the InstallScope compressed tar file for your platform by pressing one of the Download buttons below.
2. Uncompress and untar the InstallScope compressed tar file.

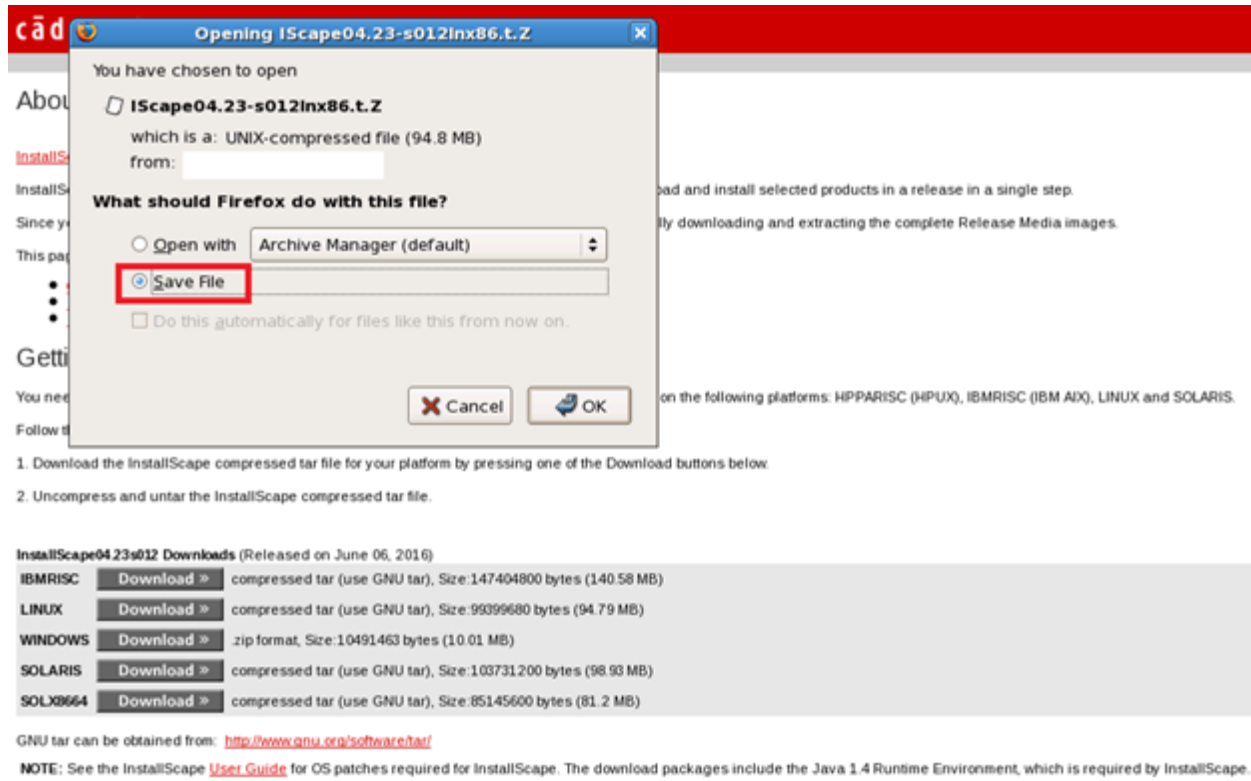
InstallScope04.23s012 Downloads (Released on June 06, 2016)

IBMRISC	Download >>	compressed tar (use GNU tar), Size:147404800 bytes (140.58 MB)
LINUX	Download >>	compressed tar (use GNU tar), Size:99399680 bytes (94.79 MB)
WINDOWS	Download >>	.zip format, Size:10491463 bytes (10.01 MB)
SOLARIS	Download >>	compressed tar (use GNU tar), Size:103731200 bytes (98.93 MB)
SOLX8664	Download >>	compressed tar (use GNU tar), Size:85145600 bytes (81.2 MB)

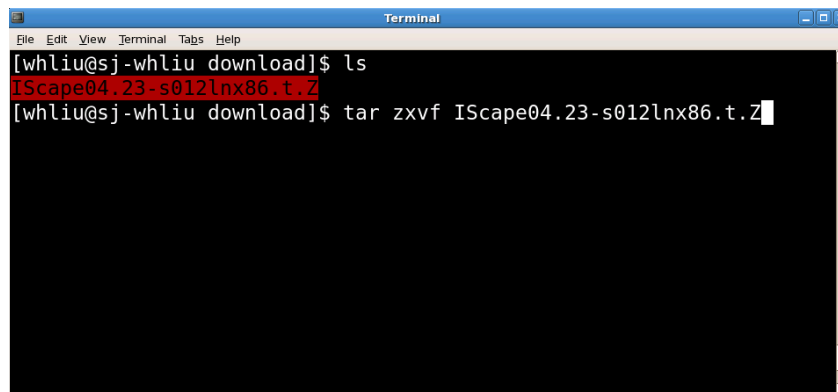
GNU tar can be obtained from: <http://www.gnu.org/software/tar/>

NOTE: See the InstallScope [User Guide](#) for OS patches required for InstallScope. The download packages include the Java 1.4 Runtime Environment, which is required by InstallScope.

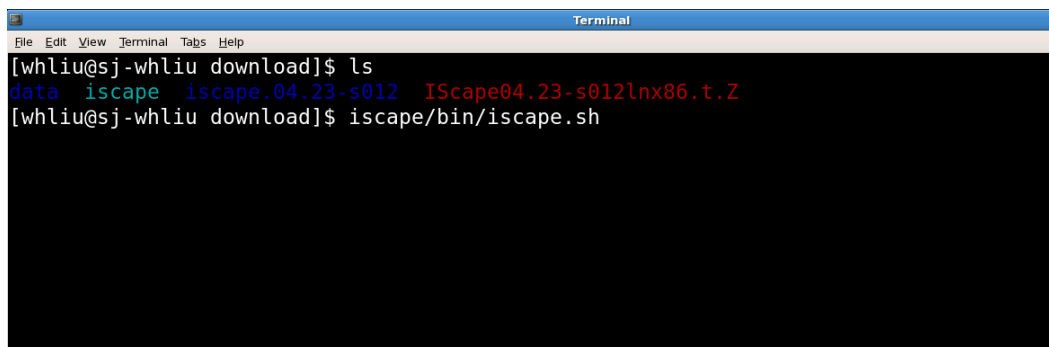
(6) Save the file "IScape04.23-s012lnx86.t.Z" to the place where has enough spacing (>95 MB)



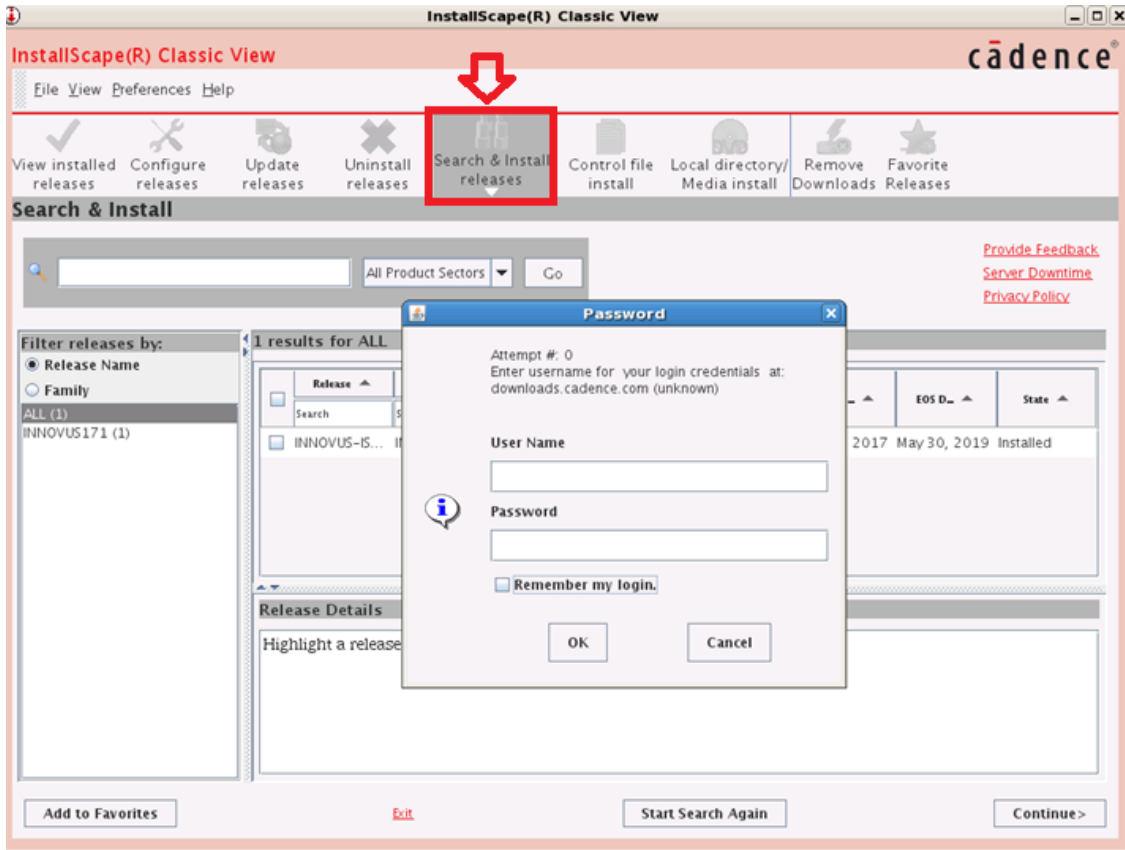
(7) Use terminal to enter the place where you download "IScape04.23-s012lnx86.t.Z" and then use command "tar xzvf IScape04.23-s012lnx86.t.Z" to unzip the file.



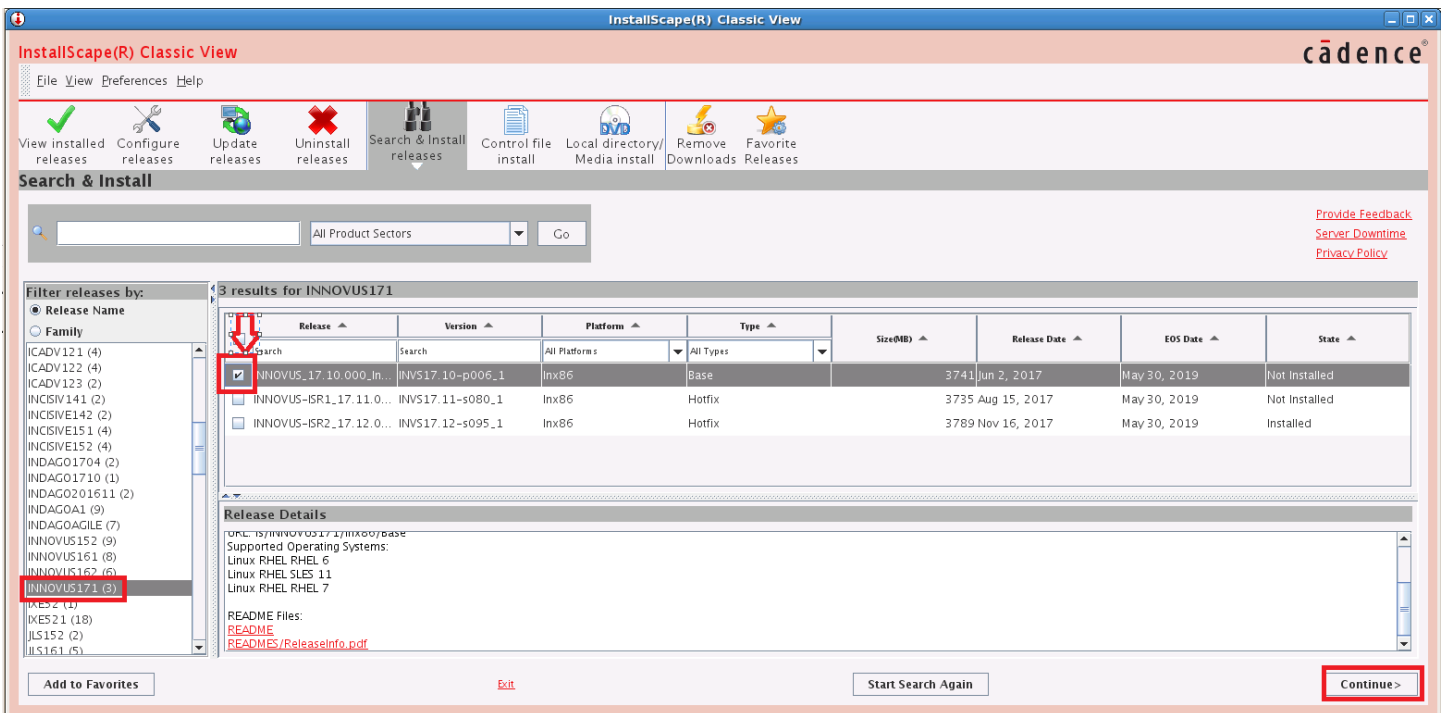
(8) After the unzip is done, execute "iscape/bin/iscape.sh" to open the cadence download tool



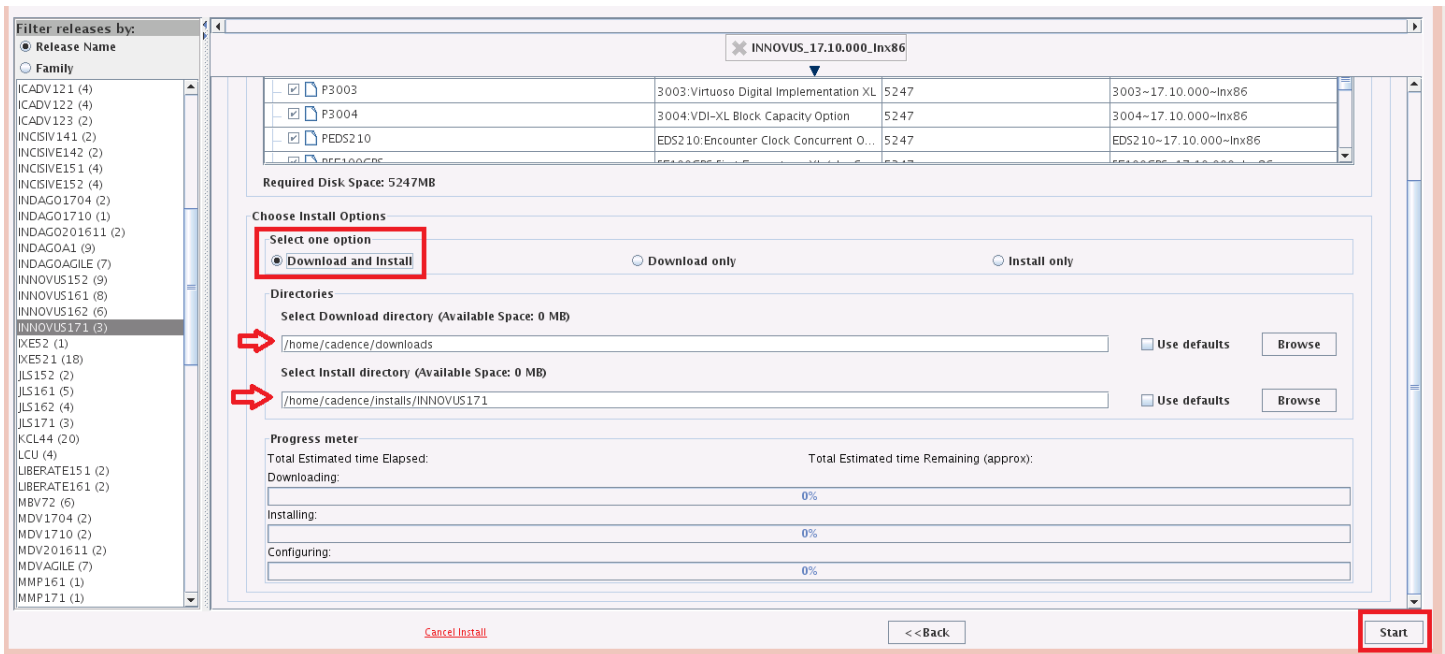
(9) Click “Search and Install Release”, and then log into your account



(10) You will see a list of Cadence tool, select “INNOVUS_17.10.000_Inx86”, and then click continue.



(11) Select “download and install”, and specify the path where you want to download and install Innovus. These two paths can be the same, but you need to have at least 4GB to install Innovus. Then, click “Start” to download and install. After the download and install both are done, you can close the download tool



(12) At the end of installation, you may or may not see the following message related to OA setting. If you don't see this message, you can skip this step. Otherwise, press “enter” to continue and then type “n”.

```

Making temporary tools link to tools.lnx86 in [redacted]
-----
Welcome to the OpenAccess 2.2 Configuration Utility.

Important: Before continuing, first close all applications that use OpenAccess
libraries. Then make sure that there are no oaDMTurboServer processes running
(kill these processes with the kill command on UNIX/Linux).

Press Enter to continue (q to quit):
-----
This utility lets you specify a different OpenAccess installation to use.

The current installation is [redacted]
Do you want to use a different OpenAccess installation (y/n/q) ? [y] █

```

(13) You can run Innovus by the command “<your install path>/bin/innovus”. But, you may see the following error message because your license server is not set yet.

```
Cadence Innovus(TM) Implementation System.
Copyright 2017 Cadence Design Systems, Inc. All rights reserved worldwide.

Version:      v17.12-s095_1, built Thu Nov 9 12:10:01 PST 2017
Options:
Date:        Wed Dec 13 19:58:51 2017
Host:
OS:
License:
             Fail to find any innovus license...
             Check your Innovus license status.

[whliu@sj-whliu bin]$
```

(14) You can setup the license server by the command “setenv CDS_LIC_FILE <port>@<machineName>”. If you don’t know which machine name you should use, please contact ispd2019contest@gmail.com.

(15) After the license server is set, you can run the command “<your install path>/bin/innovus” again. Now, you should be able to see Innovus as below, and you are ready to go.

