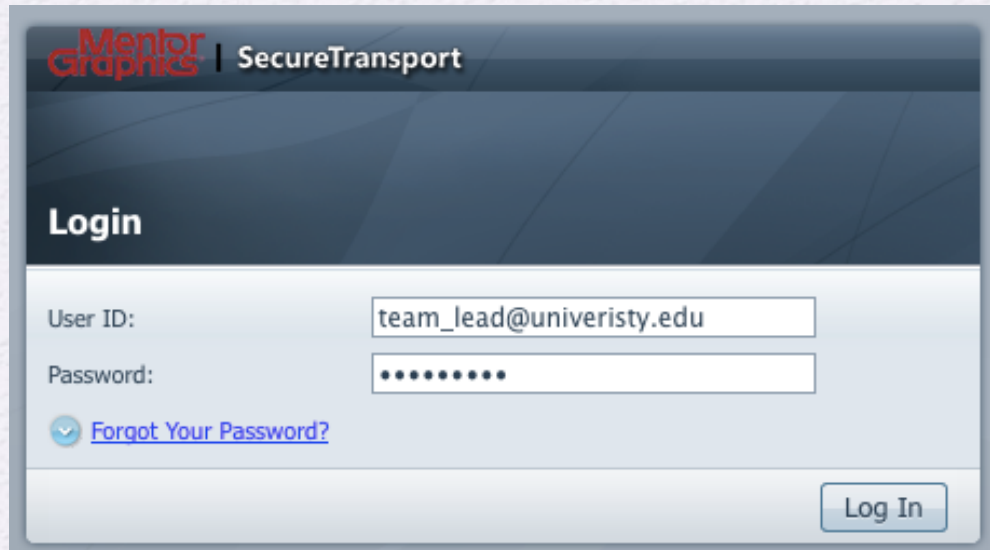


DEF Placement

Submission Procedure

DEF Placement Submission Procedure

1. Please visit mst.wv.mentorg.com.
2. Login using your support-net account email and password. If you do not have a support-net account, please e-mail ispd2014contest@gmail.com.



The screenshot shows a web browser window with the Mentor Graphics logo and 'SecureTransport' text at the top. Below this is a 'Login' section. It contains two input fields: 'User ID:' with the text 'team_lead@univeristy.edu' and 'Password:' with a masked password '.....'. There is a link for 'Forgot Your Password?' and a 'Log In' button at the bottom right.

Mentor Graphics | SecureTransport

Login

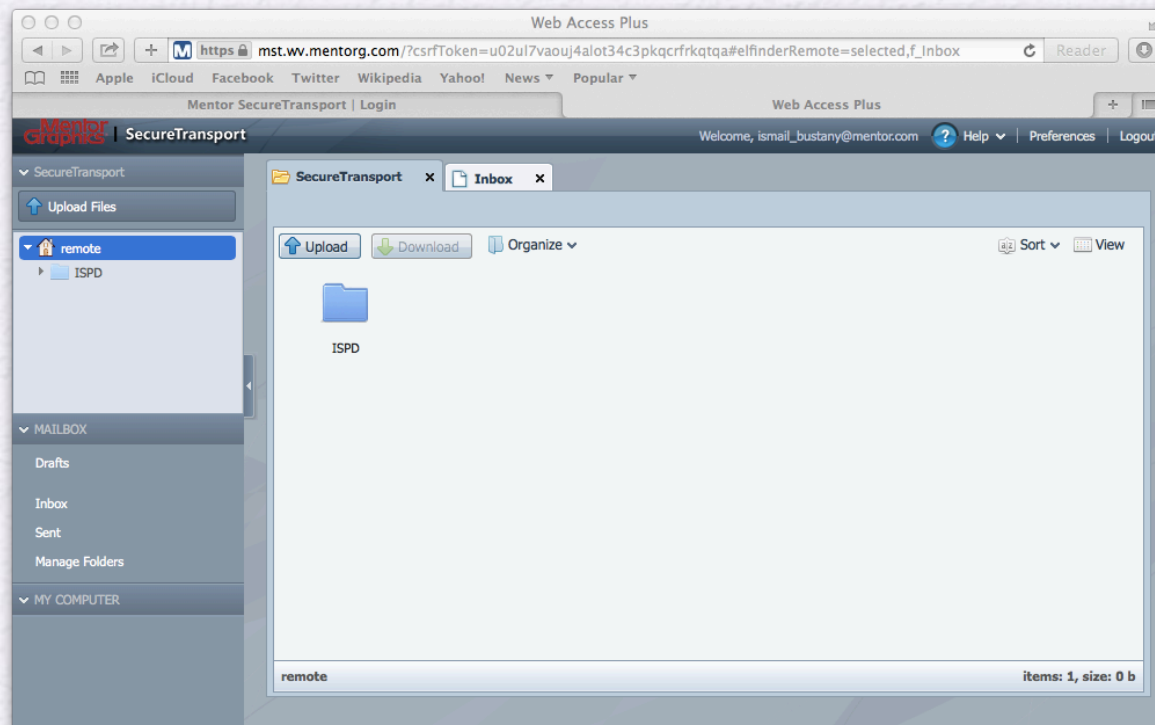
User ID:

Password:

[Forgot Your Password?](#)

DEF Placement Submission Procedure

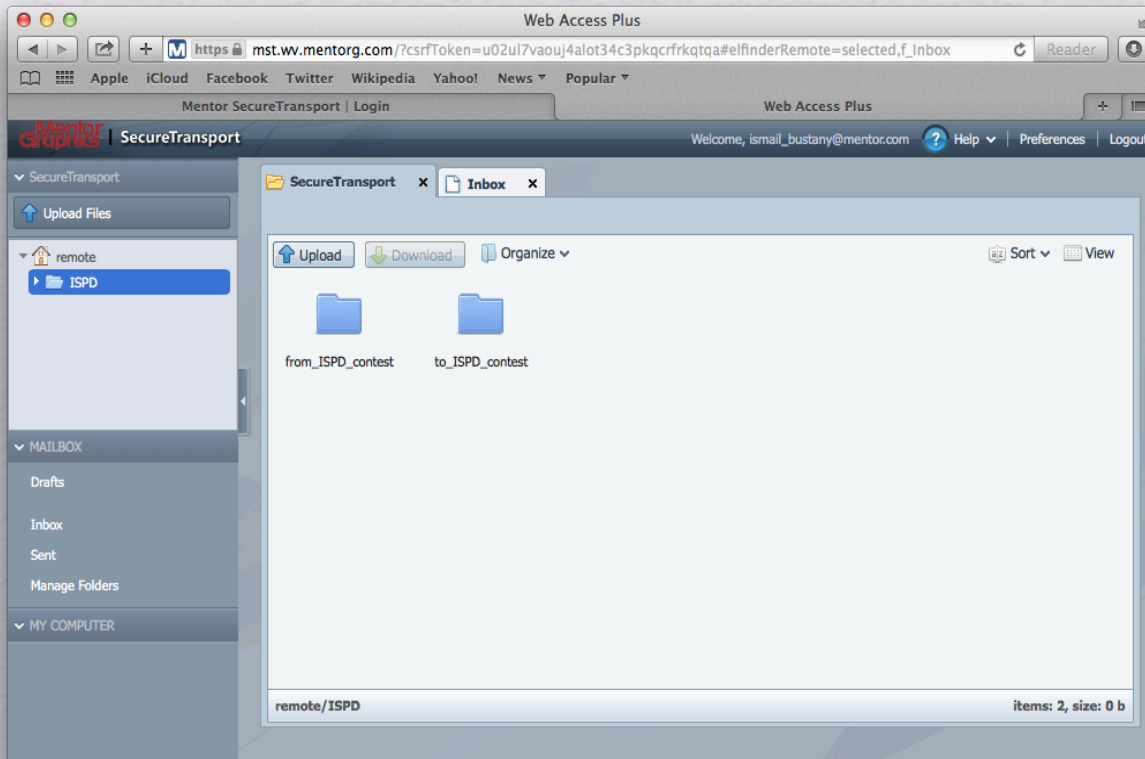
3. Once logged in, you will see the following screen:



4. Click open the ISPD folder.

DEF Placement Submission Procedure

5. You will see two folders: from_ISPD_contest and to_ISPD_contest:



6. Upload your DEF placement to the to_ISPD_contest folder. **Please, make sure to use the design name appended by “.def” or “.def.gz” (e.g. mgc_fft.def or mgc_fft.def.gz). Gzip compressed files are preferred.**

DEF Placement Submission Procedure

7. Your gzipped DEF placement file will be processed. You will be notified by e-mail once the evaluation result is ready for you to view.
8. If the input placement is not valid an error file will be copied to the from_ISPD_folder; otherwise, a tar gzipped output file will be copied there.
9. Upon e-mail notification, please login to mst.wv.mentorg.com. You can then download the output file from the from_ISPD_folder.